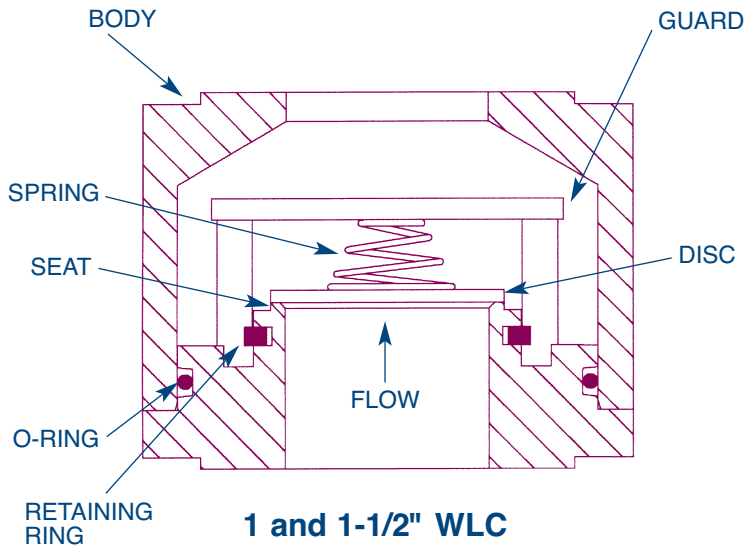
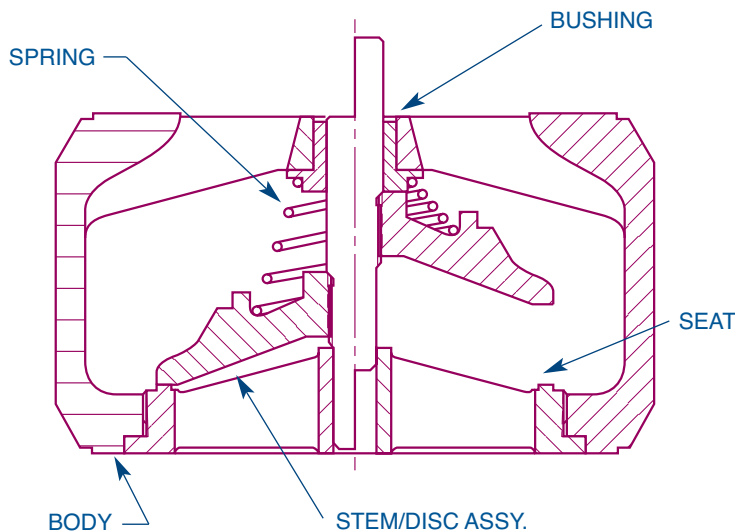


WLC®



**1 and 1-1/2" WLC
ASME 600 to 1500**



**2" and larger WLC
ASME 150 to 2500**

Features:

- **Wafer design**
- **NSF 61**
 - ASME 150/300
 - 2" to 8"
- **Lightweight**
- **Spring-assisted silent closing**
- **Edge guided (1" & 1-1/2"-ASME 600 to 2500)**
- **Center guided/Dual guided stem**
 - 1" to 10" ASME 150/300
 - 2" to 10" ASME 600 to 2500
- **Horizontal or vertical installation**
- **Protected spring**
- **ASME 150 to 2500**
 - 1" to 10" Line Size
 - WCB & SS bodies
 - SS trim
 - Ends:
 - Wafer RF
 - Wafer RTJ
 - MSS-SP 61 seat leakage
 - API 594 Face-to-Face dimension:
 - Class 600 RF
 - Class 900/1500 RF
- **OPTIONS:**
 - Inconel® X-750 Spring
 - Soft Seat
 - Custom Sizing- low flow
 - Body Materials:
 - Alloy 20, Hastelloy, Inconel® 625, Titanium
 - Stellite trim (600°F+)
 - Weld Neck Flanges to meet B16.10 Face-to-Face dimensions
 - NACE (page 33)
 - API 6D

The DFT® Model WLC Wafer style Silent Check Valve is a lightweight, spring-assisted, center guided, in-line check valve that provides reliable, low maintenance service for a wide range of fluids and pressure/temperature combinations. The joint between the seat ring and body is sealed by the flange gasket upon installation preventing any leakage through the joint when the valve is in service.

Consult pages 34 and 35 for Pressure/Temperature ratings and soft seat materials.

Class 150/300 RF

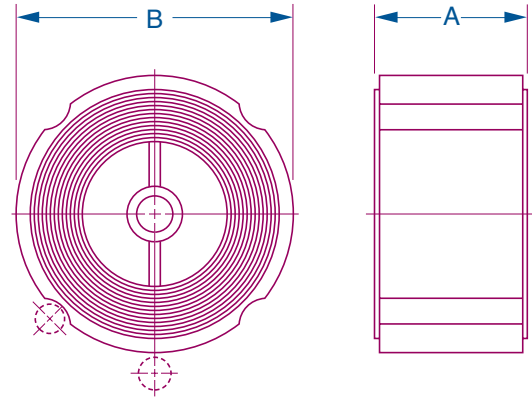
	1"	1 1/2"	2"*	2 1/2"*	3"*	4"*	5"*	6"*	8"*
A	2	2 1/2	2 5/8	2 7/8	3 1/8	4	4 5/8	5 1/2	6 1/2
B	2 7/8	3 3/4	4 3/8	5 1/8	5 3/4	7 1/8	8 1/2	9 7/8	12 1/8
Weight	2	4	4	10	12	20	35	41	86
Cv	19	36	57	95	140	265	360	506	860
CP	0.36	0.17	0.24	0.37	0.19	0.19	0.29	0.45	0.56

150 RF

10"*
8 1/4
17 5/8
138
1355
0.45

Class 600 RF⁽¹⁾

	1"	1 1/2"	2"	3"	4"	6"
A	2 3/8	2 7/8	2 3/8	2 7/8	3 1/8	5 3/8
B	2 7/8	3 3/4	4 1/4	5 3/4	7 1/2	10 3/8
Weight	2 1/2	8	5	11	21	68
Cv	19	23	53	133	234	441
CP	0.36	0.44	0.26	0.26	0.49	0.66



Dual Pressure Service:
Class 150/300 for 1" to 8", Class 900/1500 for 1" to 6"

Class 900/1500 RF⁽¹⁾

	1"	1 1/2"	2"	3"	4"	6"
A	2 3/8	2 7/8	2 3/4	3 1/4	4	6 1/4
B	3 1/8	3 7/8	5 1/2	6 3/4	8 1/8	11 1/4
Weight	4	8	14	21	38	100
Cv	19	23	48	113	211	370
CP	0.44	0.54	0.24	0.19	0.46	0.58

Class 1500 RTJ⁽²⁾

	1"	1 1/2"	2"*	3"	4"*	6"	10"
A	2 3/8	2 7/8	3 1/8	3 1/4	4 1/8	6 1/4	9 3/4
B	3 1/8	3 7/8	5 1/2	6 3/4	8 1/4	11 1/4	17 1/16
Weight	4	7	14	21	38	100	430
Cv	19	23	48	113	211	370	755
CP	0.44	0.54	0.24	0.19	0.46	0.58	0.61

1500 RF⁽²⁾

8"	10"
8 1/8	9 3/4
13 13/16	17
244	430
620	755
0.66	0.61

2500 RTJ⁽²⁾

1"	2"*	3"
2 3/8	2 13/16	3 3/8
3 1/8	5 3/4	7 1/2
4.1	17	33
19	35	80
0.44	0.97	0.56

MATERIALS OF CONSTRUCTION

COMPONENT	CARBON STEEL BODY	STAINLESS STEEL BODY
Body	A216 Grade WCB	A351 CF8M
Disc/stem assy	A351 CF8M/A479 316	A351 CF8M/A479 316
Seat ⁽³⁾	A351 CF8M	A351 CF8M
Spring	A313 316	A313 316
Bushing	A479 316	A479 316

All dimensions are in inches. Weights are in pounds.
CP: Cracking Pressure (psig)

*Does not meet API 594 face-to-face dimension. API 594 face-to-face dimensions start at 2".

Notes: (1) Size 1" and 1-1/2" have Buna-N (-70 to 250°F) body "O" ring seals. Contact DFT for other materials.
(2) All sizes have Buna-N (-70 to 250°F) body "O" ring seals except 10" CI. 1500 RTJ/RF have spiral wound body seals. Contact DFT for other materials.
(3) Soft seats are available for bubble-tight shut-off. See page 34.