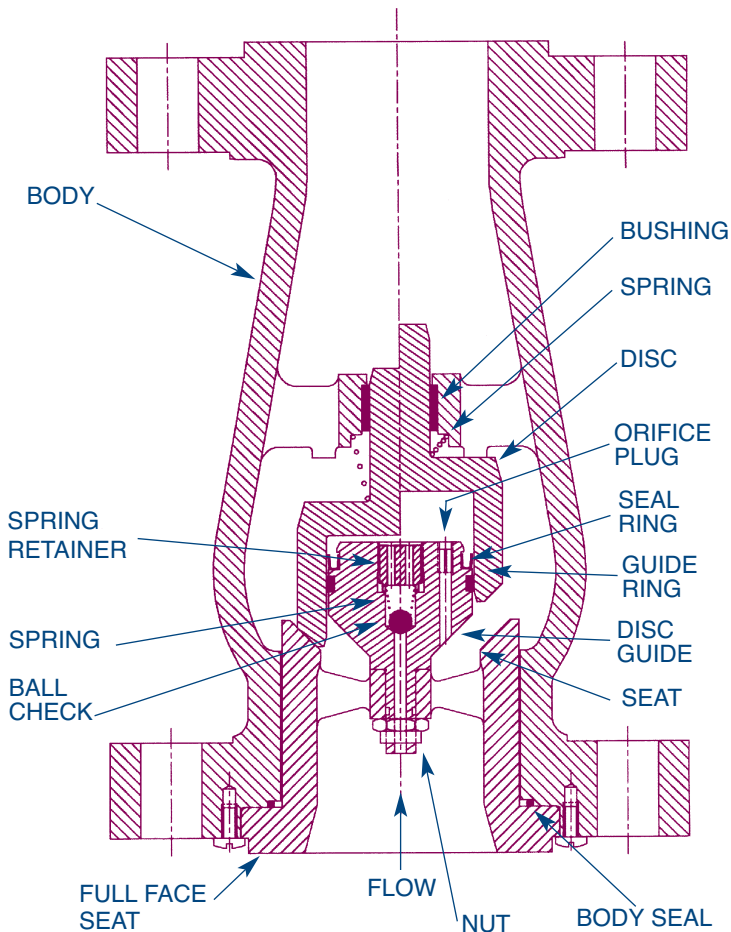


Features:



US Patent #4,766,929 #4,693,270

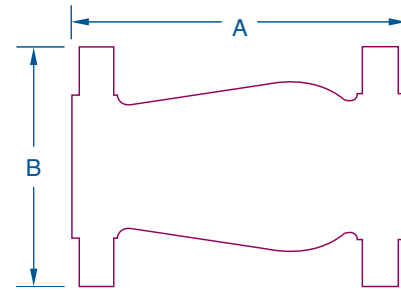
- **Pulse damped design**
- Modulating “air” or “gas” applications:
 - discharge of reciprocating air/gas compressors
 - self sizing - accommodates varying flows without chattering
- Mediums:
 - air
 - gas
- **ASME B16.10 Face-to-Face** dimensions
- One piece body
- Spring-assisted silent closing
- 2” to 12” Line size
- ASME 150 to 1500
- WCB, SS & LCC body
- SS trim
- SS spring (450°F max)
- Ends:
 - RF Flanged
 - RTJ
- Center guided
- Horizontal or vertical installation
- Tight shut-off
- Protected spring
- Easy maintenance
- Versatile
- **OPTIONS:**
 - Soft seat
 - Inconel® X-750 Spring (500°F max due to nonmetallic components)
 - Monel trim
 - NACE (Page 33)
 - API 6D

The DFT® Model PDC Silent Check Valve is specially designed for use on the discharge side of reciprocating air or gas compressors. It includes a pulse damping chamber to maintain the disc in the open position during the momentary reductions in flow associated with each cycle of a reciprocating compressor and to protect against premature seat wear.

Consult pages 34 and 35 for Pressure/Temperature ratings and soft seat materials.

Class 150 RF

	2"	3"	4"	6"	8"	12"
A	8	9 ¹ / ₂	11 ¹ / ₂	14	19 ¹ / ₂	27 ¹ / ₂
B	6	7 ¹ / ₂	9	11	13 ¹ / ₂	19
Weight	20	40	64	94	158	445
Cv	62	148	255	660	1005	2300
CP	0.41	0.62	0.68	0.51	0.66	0.29



Class 300 RF

	2"	3"	4"	6"	8"	10"	12"
A	10 ¹ / ₂	12 ¹ / ₂	14	17 ¹ / ₂	21	24 ¹ / ₂	28
B	6 ¹ / ₂	8 ¹ / ₄	10	12 ¹ / ₂	15	17 ¹ / ₂	20 ¹ / ₂
Weight	27	50	82	149	293	452	673
Cv	62	148	255	660	1005	1580	2300
CP	0.49	0.62	0.68	0.51	0.66	0.38	0.29

Class 600 RF

	2"	3"	4"	6"	8"
A	11 ¹ / ₂	14	17	22	26
B	6 ¹ / ₂	8 ¹ / ₄	10 ³ / ₄	14	16 ¹ / ₂
Weight	35	58	117	272	450
Cv	62	142	255	660	1005
CP	0.41	0.66	0.31	0.49	0.42

Class 900 RF

	2"	3"	4"	6"
A	14 ¹ / ₂	15	18	24
B	8 ¹ / ₂	9 ¹ / ₂	11 ¹ / ₂	15
Weight	65	84	144	322
Cv	55	118	224	567
CP	0.35	0.78	0.82	0.63

Class 1500 RF

	2"	3"
A	14 ¹ / ₂	18 ¹ / ₂
B	8 ¹ / ₂	10 ¹ / ₂
Weight	65	171
Cv	55	118
CP	0.35	0.78

MATERIALS OF CONSTRUCTION

COMPONENT	CARBON STEEL BODY	STAINLESS STEEL BODY
Body	A216 Grade WCB	A351 CF8M
Disc	A351 CF8M	A351 CF8M
Seat ⁽¹⁾	A351 CF8M	A351 CF8M
Spring ⁽²⁾	A313 316 (450°F max.)	A313 316 (450°F max.)
Spring for ball check	Inconel® X-750	Inconel X-750
Disc guide	A479 316	A479 316
Bushing	Rulon® ⁽³⁾	Rulon ⁽³⁾
Seal ring	Teflon®/Hastelloy® C276 ⁽³⁾	Teflon®/Hastelloy® C276 ⁽³⁾
Spring retainer - ball check	A479 316	A479 316
Guide ring	Teflon ⁽³⁾	Teflon ⁽³⁾
Ball check	440C SS	440C SS
Orifice Plug	A479 316	A479 316
Body "O" ring seal ⁽⁴⁾	Viton (-40 to 400°F)	Viton (-40 to 400°F)

PDC temperature rating is limited by the body seal material (pg. 17), spring material and nonmetallic components.

- Notes:
1. Soft seats are available for bubble-tight shutoff. See page 34.
 2. Inconel X-750 spring is available. (500°F maximum)
 3. 500°F maximum.
 4. Contact DFT for other materials.
 5. All dimensions are in inches. Weights are in pounds.

CP: Cracking Pressure (psig)